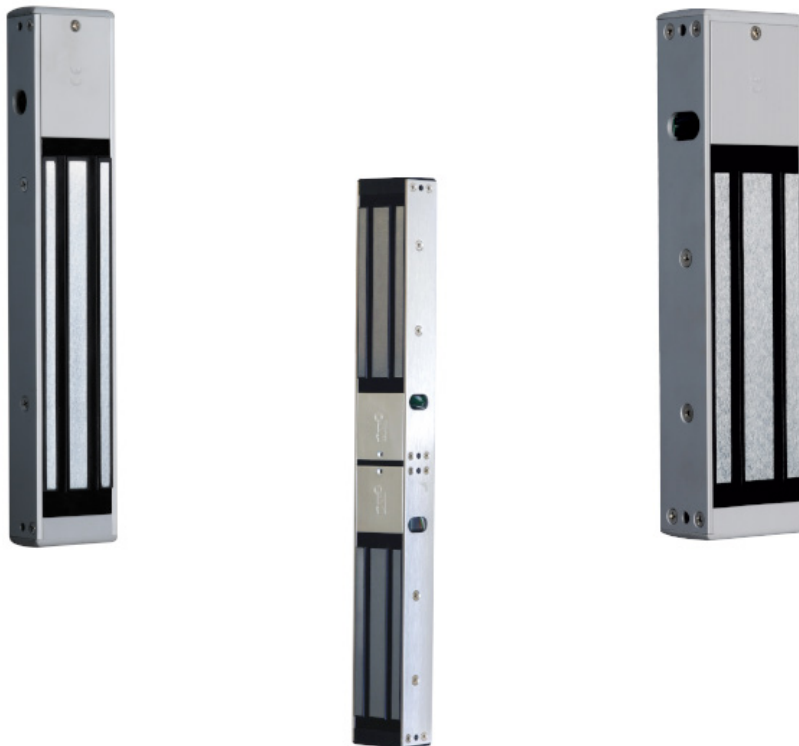


## C-Line Series

**The C-Line range of electromagnetic locks have been designed to provide a high performance, cost-effective solution to the competitive end of the magnetic locking market.** The range includes mortice and surface magnets, single and double, and 300kg or 500kg holding force.

Each model is supplied with the magnet, armature plate, template, fitting instructions and fixing kit. All the magnets within the C-Line range are fully compatible with the brackets, housings and accessories manufactured by CDVI.

A standard warranty of 12 months applies to the range.



### Overview

- Surface or mortice
- 300kg and 500kg holding force
- High quality & performance
- No moving parts
- Designed with safety features
- Security "catch" ropes

## C-Line Series - Technical Specifications

### Product References

C3M11 - Mortice magnet, monitored, 300kg  
C3S11 - Surface magnet, monitored, 300kg,  
C3S12 - Surface double magnet, monitored, 300kg  
C5S11 - Surface magnet, monitored, 500kg  
C5S12 - Surface double magnet, monitored, 500kg

### Electrical Specifications

Operating voltage: 12V to 24Vdc  
Current: @12Vdc = 610mA, @24Vdc = 305mA

### Dimensions

Dimensions - C3M11: 228 x 38 x 27mm  
Dimensions - C3S11: 255 x 45 x 26mm  
Dimensions - C3S12: 504 x 45 x 26mm  
Dimensions - C5S11: 275 x 65 x 40mm  
Dimensions - C5S12: 542 x 65 x 40mm